

green sightsm

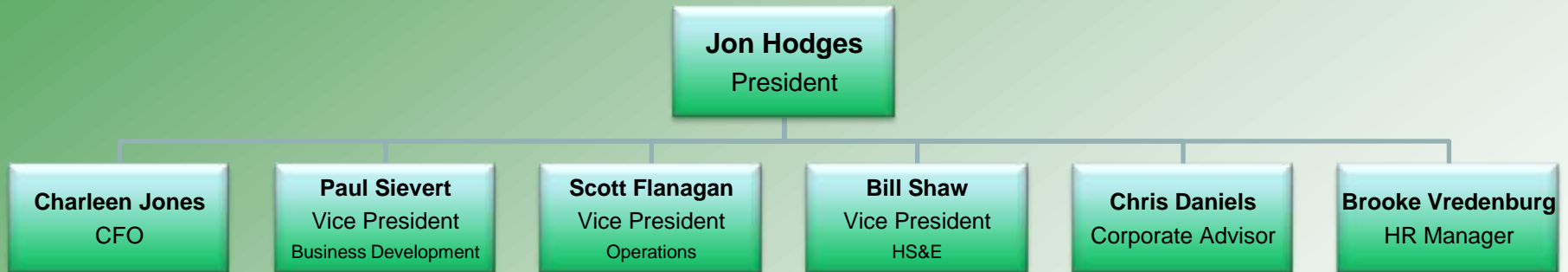
Waste Management Services



Overview

- Evergreen's Support & Resources
- VPP Level Safety Performance
- Our Waste Management Business
- References for Waste Management
- The **green sight**sm Process
- **green sight**sm Tracking, Metrics & Reporting
- Integrated Value-Added Solutions
- Strengthening the Partnership

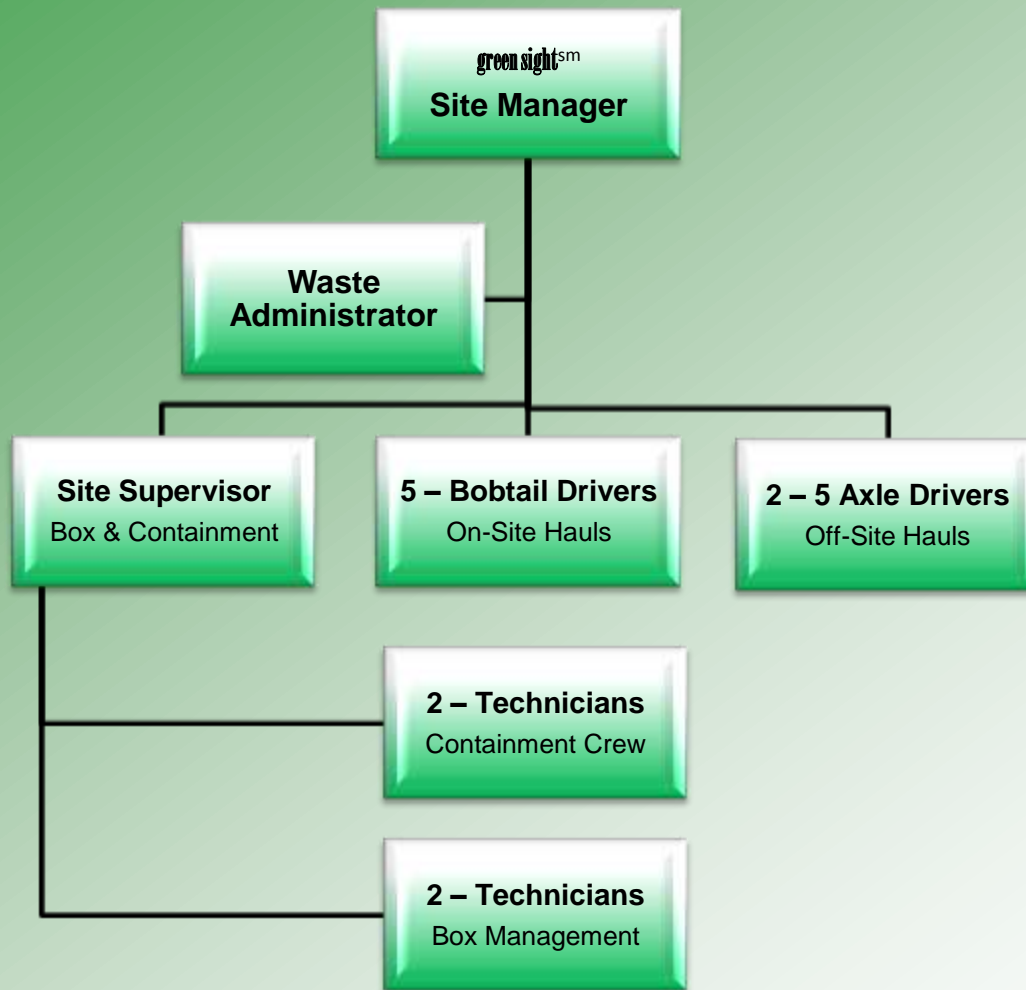
Evergreen – Corporate Support



Evergreen – Service Line Managers



Evergreen – green sightsm Sample Staffing



Evergreen – green sightsm Assets

TRANSPORTATION EQUIPMENT

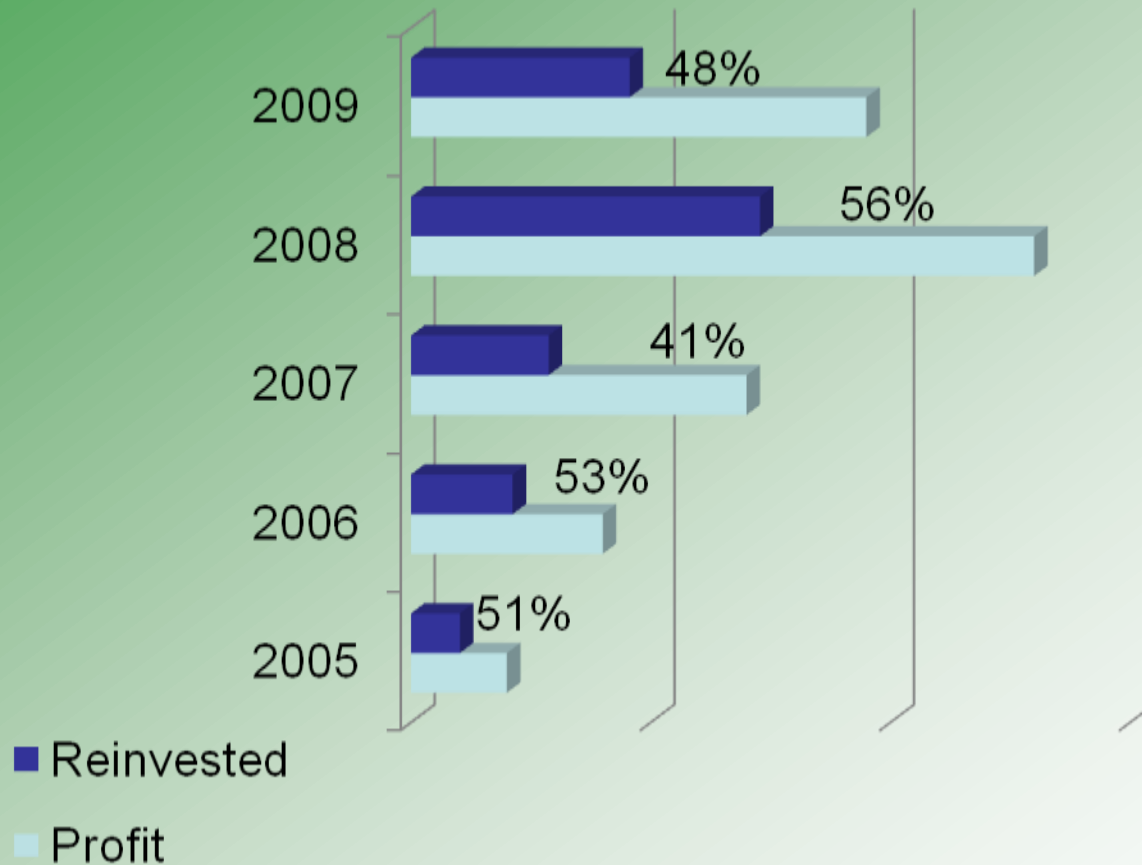
- 3-Axle “Bobtail” Units
- Single hauler roll-offs
- Drop Deck single hauler roll-offs
- Double hauler roll-offs
- Tractors
- End Dumps
- 130 BBL Vacuum Tanks
- Pneumatic Trailers
- Flatbeds

STORAGE & CONTAINMENT

- Open Top Roll Tarp Boxes
- Vacuum Boxes
- De-Watering Boxes
- Roll Lid Boxes
- Portable Hoppers
- Tankers
- Frac Tanks
- Containment

Average Age of Rolling Fleet < 2 years

Profit Reinvested in Equipment



Evergreen – Vendor Partnerships

Evergreen continues to develop and maintain partnerships with select suppliers providing extended resources which enables Evergreen to offer expanded services, capabilities and new technologies to our clients.

- Qualifications include:
 - Excellent safety metrics
 - Financially fit
 - Strong, service-oriented culture
 - High quality products and services
 - Proven performance
- Select Suppliers
 - **TIBC** for Box Rental
 - **BakerCorp** for Frac Tanks

Evergreen – Locations



La Porte, TX
Full Service Branch
Box Yard

Beaumont, TX
Full Service Branch
Box Yard

Lake Charles, LA
Full Service Branch
Box Yard

Gonzales, LA
Box Yard

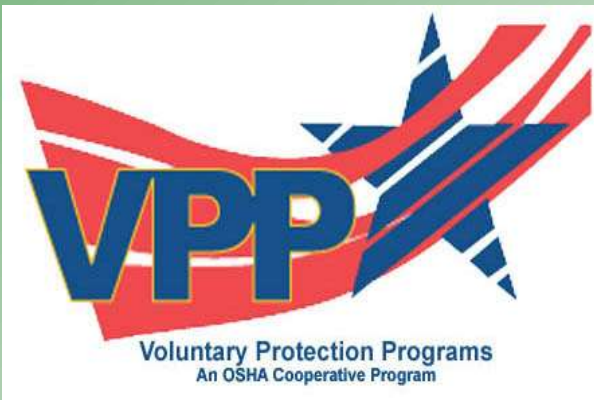
Texas City, TX
Full Service Branch
Box Yard

Corpus Christi, TX
Full Service Branch
Box Yard

Evergreen's Safety KPI's

Year	2006	2007	2008	2009
TRIR	0.00	1.83	0.57	0.00
LWDIR	0.00	0.46	0.28	0.00

EMR	0.77
------------	-------------



- 4 NPRA Contractor Merit Awards
- 2 ISTC (Industrial Safety Training Council) Safety Awards
- Houston Business Roundtable Gold Medalist
- Achieved 1 year with no recordable on 11/24/09
- Southwest Louisiana Council Contractor Safety Award
- VPP Star Status at Texas City Branch
- VPP Star Status at Valero Refinery – Houston, TX
- Award from CSCCB (Contractor Safety Council of the Coastal Bend)
- Safety Contractor Award from Exxon Mobil
- Gold Level STEP (Safety Training and Evaluation Process) award from Associated Builders and Contractors
- Silver Level CTEP (Craft Training Evaluation Process) award from Associated Builders and Contractors
- Nominated to receive award for Golden Triangle Business Roundtable

Evergreen Gets VPP Star Worksite

In addition to the Valero Refinery site, Evergreen receives its second VPP designation for our Texas City branch. OSHA VPP committee announces in December 2009 and presents banner and flag in March 2010 to Texas City branch.



Evergreen's green sightsm Program

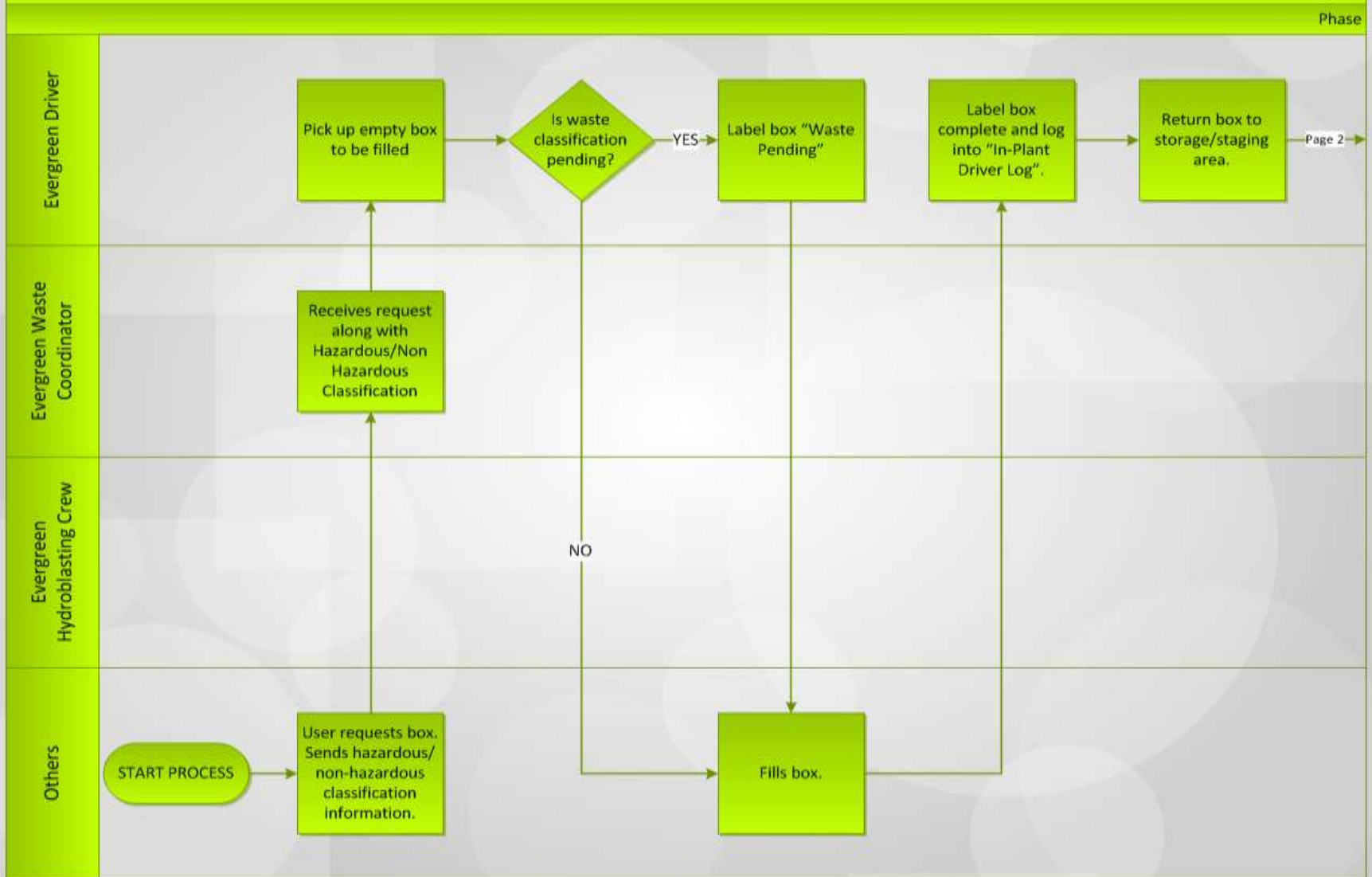
- Comprehensive
 - Tracking
 - Metrics
 - Reporting
- Represented 25% of revenue for 2009.
- Integrated service offering that is a stand alone service and can be bolted on to an existing contract.
- Resource Ready.



References

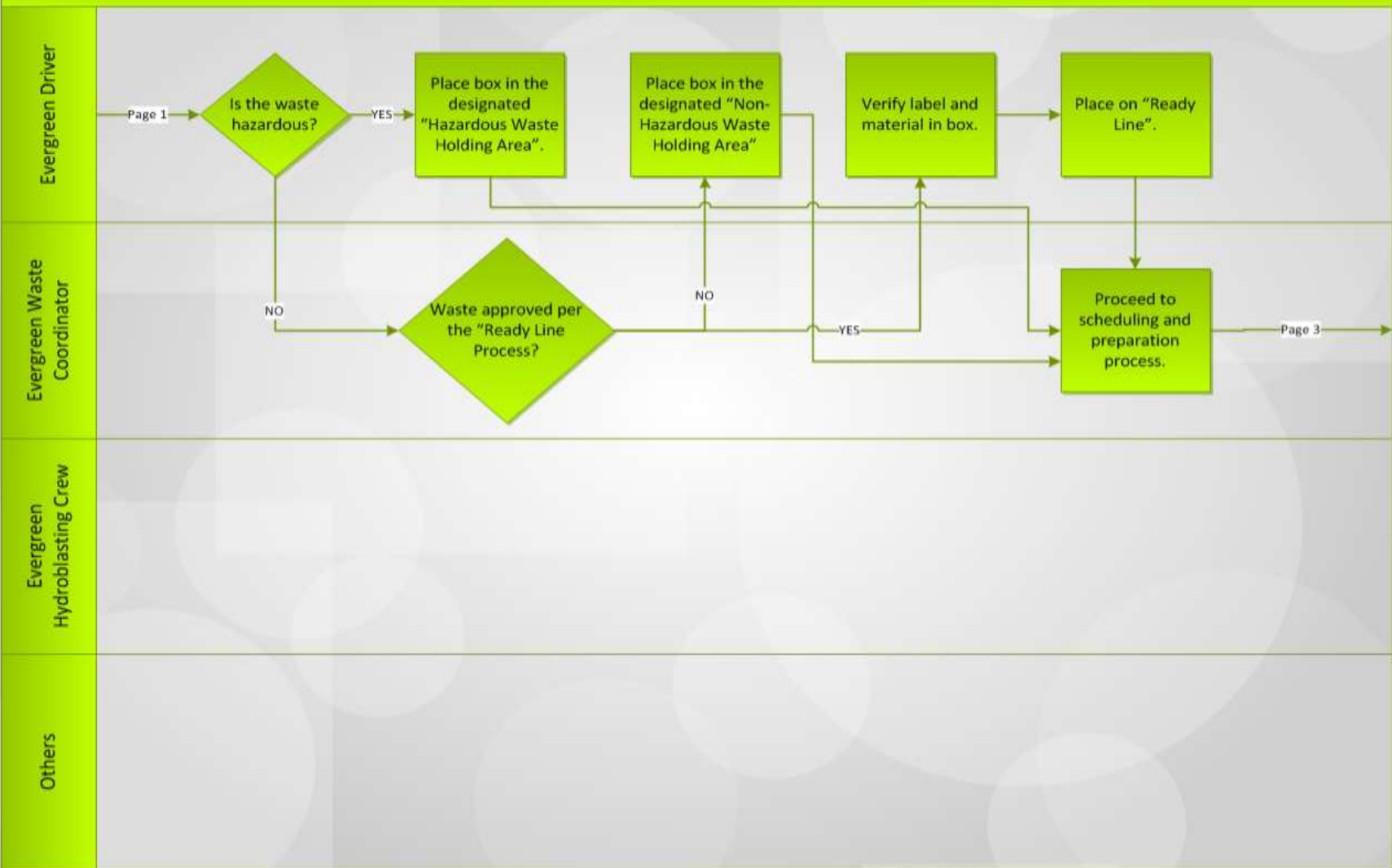
- **Sterling – Texas City, TX**
 - Rob McLaren 409-942-3331
- **BP – Texas City, TX**
 - Scott McDonald 409-370-0899
- **Merichem – Lake Charles, LA**
 - Heather Caldwell 205-462-2275
- **Allied Waste – Pasadena, TX**
 - Terence Jones 281-204-5989
- **Valero Refining – Houston, TX**
 - James Ermel 832-316-1898

Evergreen Industrial Services – green sightSM Process Map – Page 1

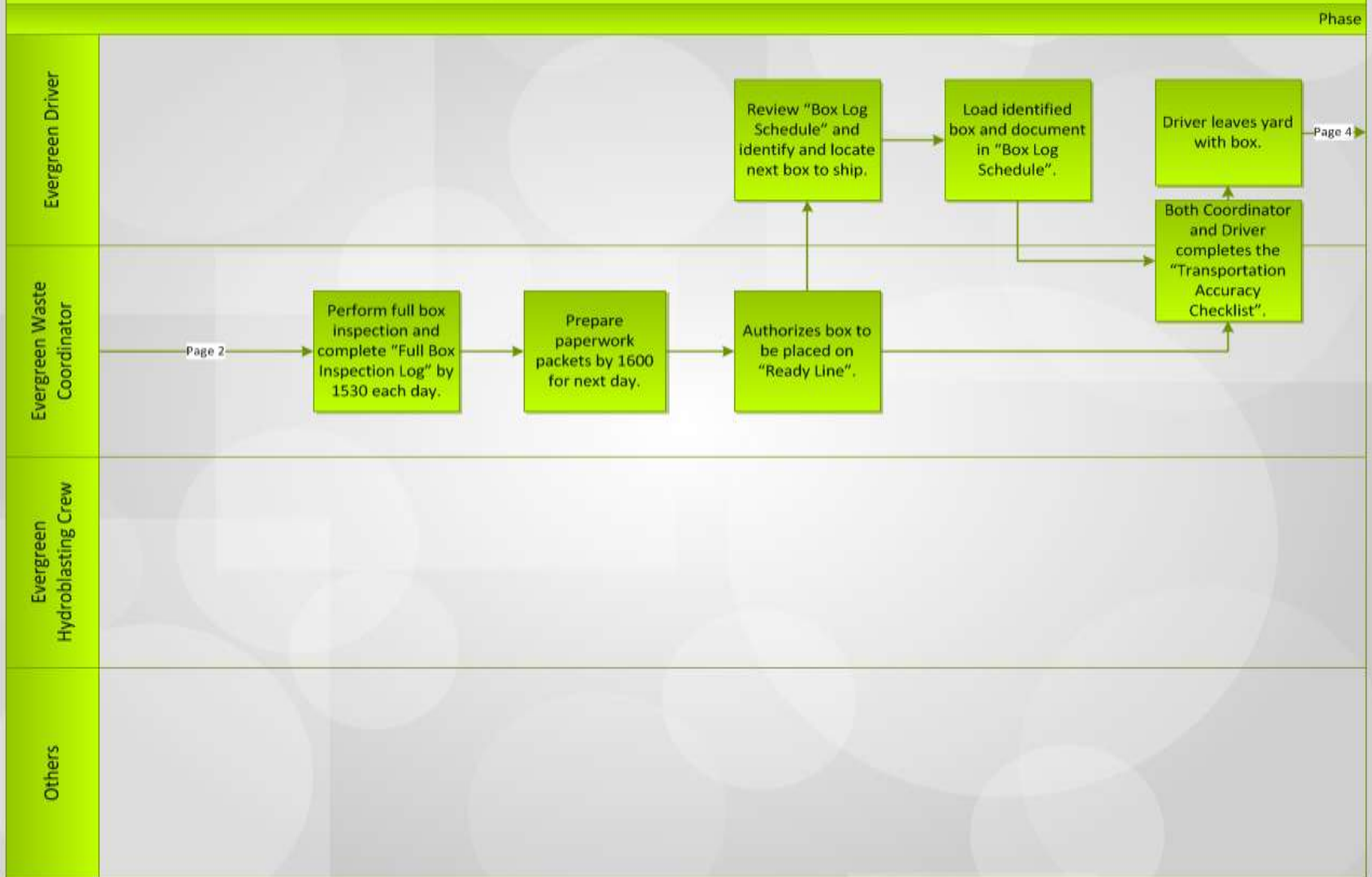


Evergreen Industrial Services – green sightSM Process Map – Page 2

Phase



Evergreen Industrial Services – green sightSM Process Map – Page 3



green sightsm – Key Checklist

Transportation Accuracy Checklist

Date: _____

Truck Number: _____

Box Number: _____

Driver Name: _____

Dispatch Name: _____

This form is to be filled out by the Driver and the Dispatcher **BEFORE** any load leaves a Facility (Facility= Any site that generates waste). Each item is to be verified and initialed by both parties and the form is to be signed and dated by both parties. The truck driver is to fill in all information and initial/sign, and the dispatcher is to verify and initial/sign.

Manifest/BOL# _____ Driver: _____ Dispatcher: _____

Label matches Manifest/BOL _____ Driver: _____ Dispatcher: _____

Manifest Dated: _____ Driver: _____ Dispatcher: _____

Box Number on Manifest: _____ Driver: _____ Dispatcher: _____

Destination: _____ Driver: _____ Dispatcher: _____

MO# on Manifest/BOL _____ Driver: _____ Dispatcher: _____

Load is Secure & Safe to haul. Driver: _____ Dispatcher: _____

Double Check Load Security!

Remember: An ounce of prevention is worth a pound of cure!

BE SAFE!

Have a Good Trip!

Driver Signature

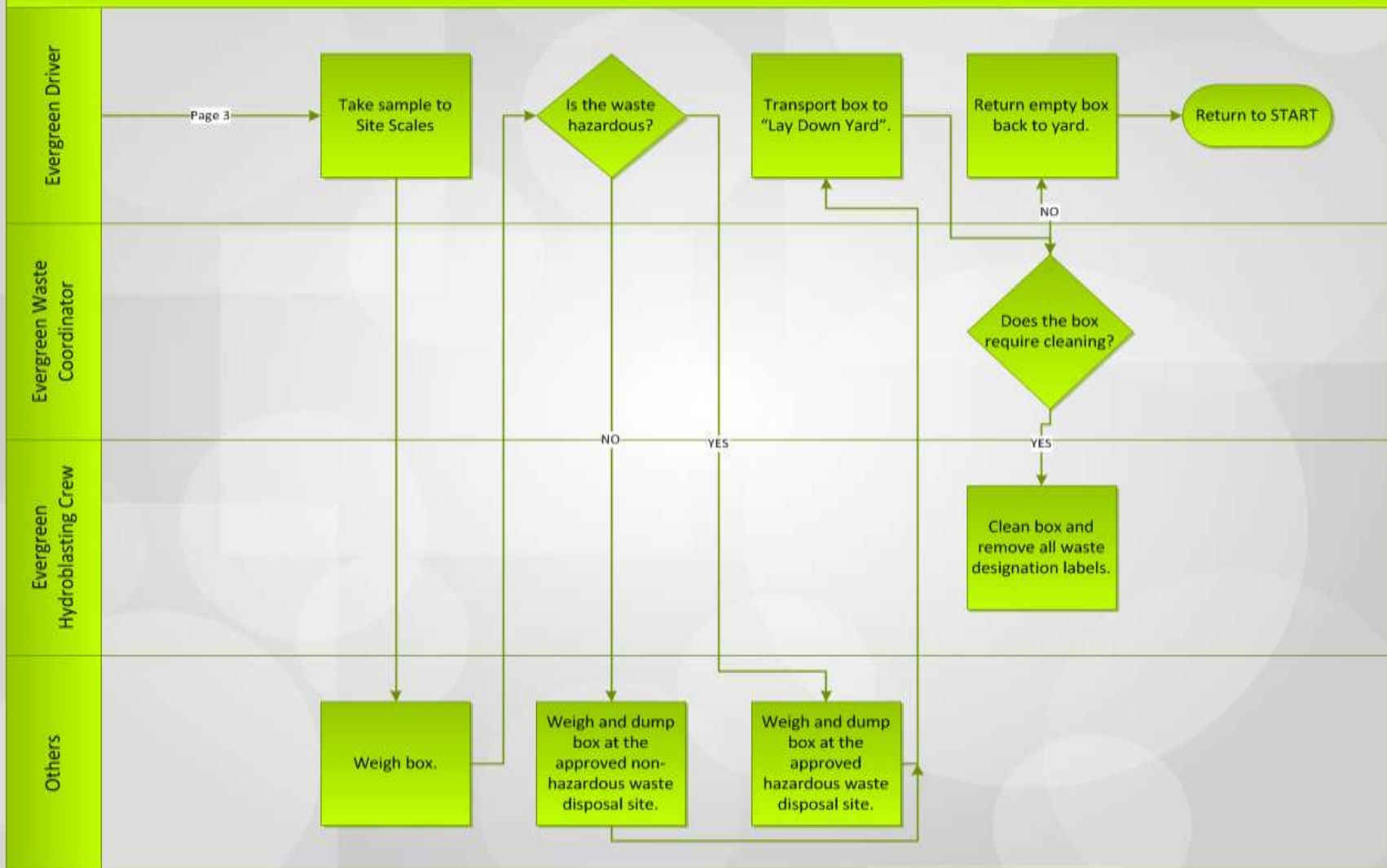
Dispatch Signature

Date

Date

Evergreen Industrial Services – green sightSM Process Map – Page 4

Phase



green sightsm Tracking, Metrics & Reports

Date	Box #	Contents of Box	Waste Facility	Material	Work Order #	Manifest #	Dermge Time	PO#
3/13/2006	T418	PLANT	WASTE MANAGEMENT	TRASH	1041238	3355224		10401785
3/13/2006	WT814	INSULATION	WASTE MANAGEMENT	INSULATION	1041238	3355229		10401785
3/10/2006	T418	PLANT	WASTE MANAGEMENT	TRASH	1041238	3355223		10401785
3/15/2006	N36374	TK 2	WASTE MANAGEMENT	INSULATION	1041238	3355228		10401785
3/22/2006	RB26644	WAREHOUSE	SCC	SOIL	1147524	BOL		4500837749
3/30/2006	RB25609	SOIL	SCC	SOIL	1228453	BOL	0.5	4500850444
3/8/2006	WT743	PLANT	WASTE MANAGEMENT	TRASH	1228453	019203		4500850444
3/29/2006	RB26194	SHAW	WASTE MANAGEMENT	TRASH	1228453	019199		4500850444
3/24/2006	RB26252	PLANT	DURATHERM	SOLIDS	1228453	3355382		4500850444
3/24/2006	N26855	PLANT	DURATHERM	SOLIDS	1228453	3355364		4500850444
3/24/2006	RB25008	PLANT	DURATHERM	SOLIDS	1228453	3355366		4500850444
3/13/2006	N36303RB	TRAP ROAD	DURATHERM	SLUDGE	1228453	3355260		4500850444
3/15/2006	RB26641	TRAP ROAD	DURATHERM	SOIL	1228453	3355322		4500850444
3/15/2006	WT809	TRAP ROAD	DURATHERM	SOLIDS	1228453	3355323		4500850444
3/20/2006	RB25288	TRAP ROAD	DURATHERM	SLUDGE	1228453	3355325		4500850444
3/20/2006	RB20320	TRAP ROAD	DURATHERM	SOLIDS	1228453	3355324		4500850444
3/24/2006	N34380	TRAP ROAD	DURATHERM	SOLIDS	1228453	3355361		4500850444
3/24/2006	N36306	TRAP ROAD	DURATHERM	SOLIDS	1228453	3355363		4500850444
3/24/2006	N5738RB	TRAP ROAD	DURATHERM	SOLIDS	1228453	335536		4500850444
3/15/2006	RB25198	NEW SLAB	SCC	SOIL	1228453	BOL		4500850444
3/4/2006	R2526RT	A PUMP	SCC	SOIL	1228453	BOL		4500850444
3/11/2006	RB25233	A PUMP	SCC	SOIL	1228453	BOL		4500850444
3/13/2006	RB25797	A PUMP	SCC	SOIL	1228453	BOL		4500850444
3/18/2006	25353	A PUMP	SCC	SOIL	1228453	BOL		4500850444
3/6/2006	RB25198	A PUMP	SCC	SOIL	1228453	BOL		4500850444
3/6/2006	RB25999	BULLETS	SCC	SOIL	1228453	BOL		4500850444

green sightsm Tracking, Metrics & Reports

	Box #	Type	Size	Site	Material	WO#	1	2	3	4	5	6	7	8	9	10	11	12	13	14	15
1	2064	ot	25	t-370	empty	1393464	1	1	1	1	1	1	1	1	1	1	1	1	1	1	1
2	6122	ot	25	mirox reactor	catalyst	1462137	1	1	1	1	1	1	1	1	1	1	1	1	1	1	1
3	25-69	ot	25	derrick	soil	1228453	c														
4	25-69	ot	25	fcc	concrete	1228453	1	1	1	1	1	1	c								
5	25-69	ot	25	cogen	soil	1372391							1	1	1	1	1	1	1	1	1
6	25-69	ot	25	yard	wood	1461342															
7	25-90	ot	25	wall	soil	1408575	1	1	1	1	1	1	1	1	1	1	1	1	1	1	1
8	303-25	ot	25	tk 914	insulation	1346355	1	1	1	1	1	1	1	1	1	1	1	1	1	1	1
9	30a01	40	40	yard	asbestos	1462137	1	1	1	1	1	1	1	1	1	1	1	1	1	1	1
10	79-25	ot	25	fcc	soil	1228453	1	1	1	1	1	1	1	1	1	1	1	1	1	1	1
11	b200	ot	25	yard	asphalt	1462137	1	1	1	1	1	1	1	1	1	1	1	1	1	1	1
12	DB25008	ot	25	derrick	soil	1228453	1	1	1	1	1	1	1	1	1	1	1	1	1	1	1
13	DW306	dw	40	cwa	river sand	1462214	1	1	1	1	1	1	1	1	c						
14	Dw307	dw	40	cwa	river sand	1462214	1	1	1	1	1	1	1	1	c						
15	EEW102	ot	25	tk #2	soil	1228453	1	1	1	1	1	1	1	1	1	1	1	1	1	1	1
16	N10776RB	ot	25	sru	asbestos	1228453	1	1	1	1	1	1	1	1	1	1	1	1	1	1	1
17	N11623RB	ot	25	traweek	asbestos	1228453	1	1	1	1	1	1	1	1	1	1	1	1	1	1	1
18	N12111	ot	25	new slab	soil	1228453															1
19	N12111	ot	25	a pump	soil	1228453	1	1	c												
20	N12111	ot	25	fcc	soil	1228453													1	1	c
21	N12111	ot	25	bullets	soil	1228453						1	1	1	1	c					
22	N12111	ot	25	col #2	soil	1228453															

green sightsm Tracking, Metrics & Reports

Sum of Dermge Time																					
PO#	Work Order #	Total		Material	WO#	1	2	3	4	5	6	7	8	9	10	11	12	13	14	15	
10401785	1041238			empty	1393464	1	1	1	1	1	1	1	1	1	1	1	1	1	1	1	
10401785 Total			Count of Work Order #							1	1	1	1	1	1	1	1	1	1	1	1
4500758149	13		PO#	Work Order	Waste Facility	Total															
4500758149 Total			10401785	1041238	WASTE MANAGEMENT	4															
4500772740	13		10401785 Total							4	1	1	c								
4500772740 Total			4500758149	1346355	WASTE MANAGEMENT	4						1	1	1	1	1	1	1	1	1	1
4500798048	14		4500758149 Total							Sum of Total Days											
4500798048 Total			4500772740	1372391	SCC	PO #		WO#		Type		Total									
4500772740 Total			4500798048	1408575	SCC	10401785		1041238		ot		45									
4500798048 Total			4500772740 Total							10401785 Total				45							
4500837749	14		4500837749	1147524	SCC	4500687934		1262572		ot		9									
	14			1461340	HPP	4500687934 Total						9									
	14			1461341	SCC	4500758149		1346355		ot		38									
	14			1461342	SCC	4500758149 Total						38									
	14				WASTE MANA	4500761786		1361885		ot		24									
4500837749 Total			1462214	SCC	4500761786 Total						24										
4500850444	12			1462216	DURATHERM	4500772740		1372391		ot		133									
4500850444 Total				SCC	4500772740 Total						133										
4500875652	14		4500837749 Total							4500791671		1393464		ot		62					
4500875652 Total			4500850444	1228453	DURATHERM	4500791671 Total						62									
Grand Total				SCC	4500798048		1408575		ot		243										
18	N12111	ot	4500850444 Total							4500798048 Total				243							
19	N12111	ot	4500875652	1457592	DURATHERM	4500812971		1423280		ot		1									
20	N12111	ot	4500875652 Total							4500812971 Total				1							
21	N12111	ot	Grand Total							4500832364		1441896		ot		15					
22	N12111	ot	25	col #2	soil	1228		4500832364 Total						15							

Evergreen's Pricing Solutions

Evergreen offers several pricing structures for our **green sight**sm program.

- Fixed Fee
 - Requires a defined scope of services & equipment.
 - Can be for equipment only.
- Time & Material
 - Charged as consumed.
- Customized Pricing Solution
 - Blend of Time & Material and Fixed Fee pricing.

Evergreen's Value-Added Solutions

- **green sightsm** Integrated Service Offering
- Benchmarking KPI's
- Customized Solutions for Improvement
- Commitment to Obtain VPP Status at FHR!
- Off-Rent Program
- “No Box Left Behind”....Guaranteed!
- Performance Guarantee!!

Evergreen's green sitesm

Why Evergreen?

- Proven Capability with green sightsm program
- Superior Safety Processes – VPP Quality
 - Driver Certification Program
 - HBR Safety Excellence Award, NPRA, ISTC, ACIT
 - 993 days w/o OSHA, 2.5 MM Miles w/o MVA
- Dedicated Personnel & Equipment
 - On-Site Resources + Close Corporate Support
- Proven Processes
 - Execution
 - Tracking
 - Measurement Systems
- Integrate into existing Partnership!

Result: Reduced Costs – Increased Productivity



Thank You!

Evergreen's **green sight**sm ...*setting the standard!!*